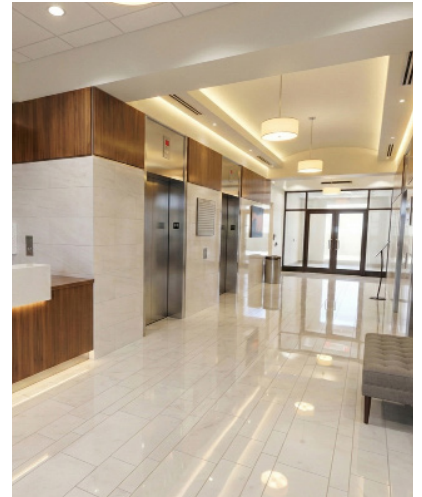
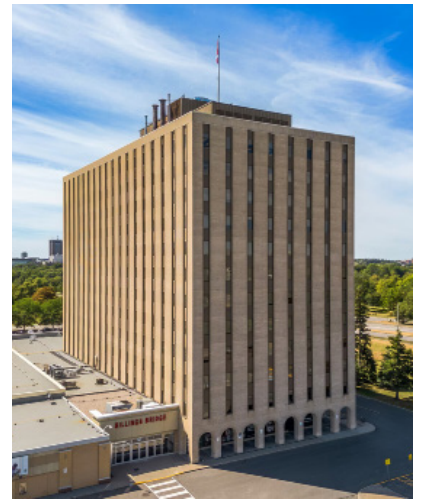


**For Lease**



Billings Bridge Tower | 2323 Riverside Drive, Ottawa, ON

# Office Opportunities with Unmatched Brand Exposure at Billings Bridge Tower

**Charles Walwyn**

Senior Director, Leasing / Broker  
cwalwyn@salthillcapital.com / 416.646.7359



Salthill Property Management Inc. Real Estate Brokerage

# Suite Sizes

**Suites** 40,000 SF - 130,000 SF

**Available** Immediately

**Net Rent** Contact Agent

**Additional Rent** Contact Agent

**Comments** Achieve maximum market visibility with this unprecedented chance to place your logo directly on the tower crown.

**84** **Walk Score®**  
Very Walkable

**73** **Transit Score®**  
Excellent Transit

**94** **Bike Score®**  
Biker's Paradise

## Highlights



### Immediate Transit Access

Direct indoor connection to the OC Transpo bus station (Billings Bridge Station).



### On-Site Food Court & Dining

Access to the shopping centre's food court, restaurants, and grocery stores.



### Convenient Shopping & Services

Direct indoor access to over 80 stores and services.

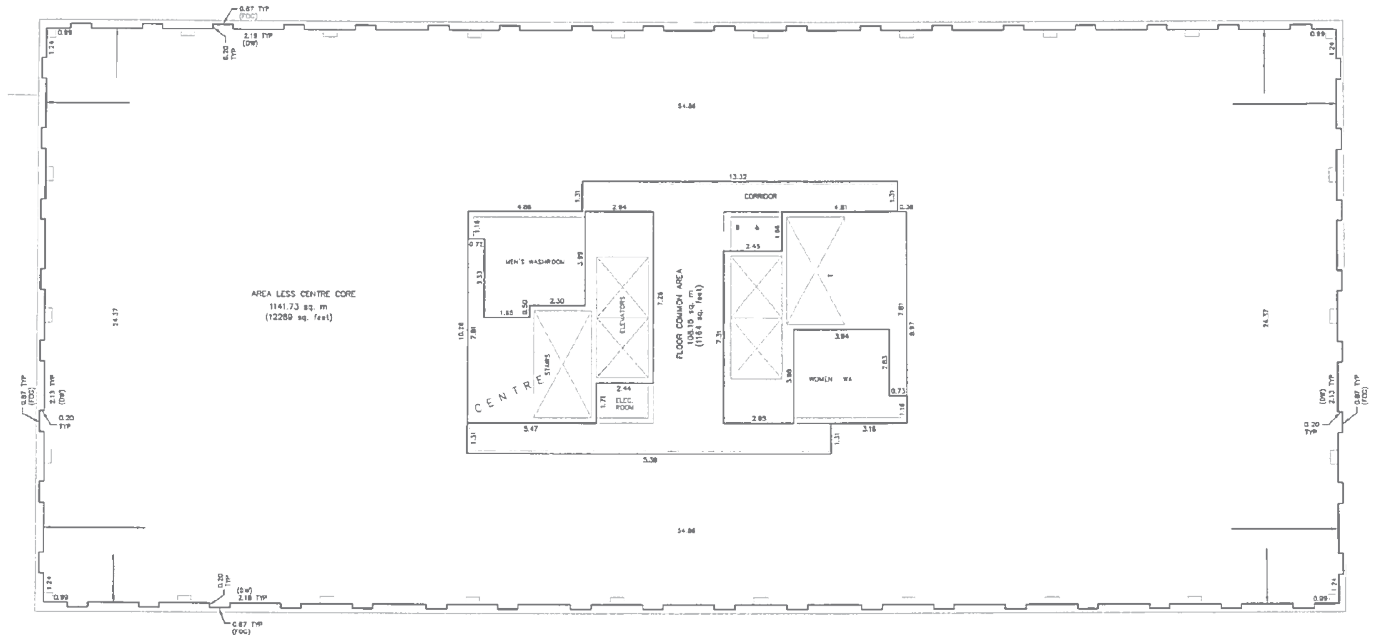


### Free Ample Parking

The office tower benefits from the shopping centre's large parking facilities



# Floor Plan



## Virtual Fit-out



# Gallery





**Charles Walwyn**

Senior Director, Leasing / Broker  
cwalwyn@salthillcapital.com / 416.646.7359

\* The images shown are artistic renderings and are intended for demonstration purposes only.

\*\*All Rights Reserved. This presentation contains privileged and confidential information; do not duplicate or distribute without permission from Salthill.

\*\*\*Every effort has been made to offer current and accurate information to our uses, but errors can occur. Salthill assumes no liability or responsibility for any errors or omissions in the content contained in this presentation. Furthermore, this presentation may contain references that may change over time and should be interpreted only in light of particular circumstances.

The information contained herein, including layouts, plans, and stated square footage, is provided solely for marketing purposes. Such information is approximate, non binding, and subject to change without notice.