

For Lease



2211 Riverside Drive | Ottawa, ON

Office Opportunities at 2211 Riverside Drive in Ottawa's Sought-after Riverside Neighborhood

Charles Walwyn

Senior Director, Leasing / Broker
cwalwyn@salthillcapital.com / 416.646.7359

 **Salthill**

Salthill Property Management Inc. Real Estate Brokerage

Suite Sizes

Suites 5,000 SF - 35,000 SF

Available Immediately

Net Rent Contact Agent

Additional Rent Contact Agent

93 **Walk Score®**
Walker's Paradise

72 **Transit Score®**
Excellent Transit

99 **Bike Score®**
Biker's Paradise

Highlights



Immediate Transit Access

Located adjacent to the OC Transpo bus station (Billings Bridge Station).



On-Site Food Court & Dining

Access to Billings Bridge Shopping Centre's food court, restaurants, and grocery stores steps away.



Convenient Shopping & Services

Access to over 80 stores and services.

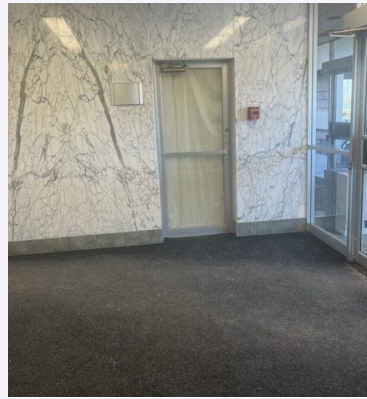
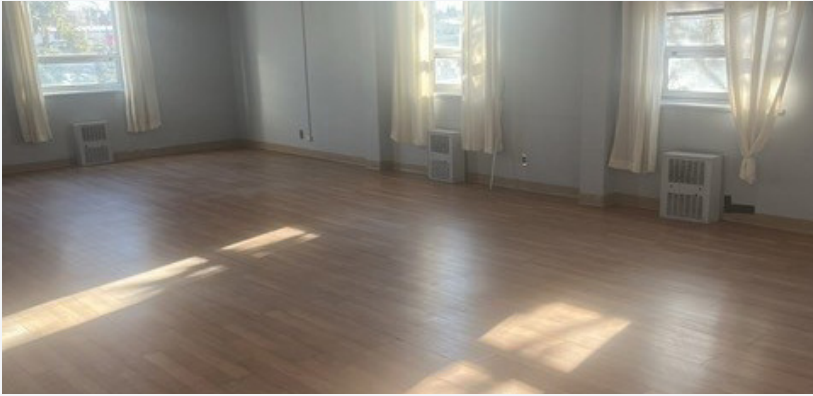


Free Ample Parking

Ample large parking facilities



Gallery





Charles Walwyn

Senior Director, Leasing / Broker
cwalwyn@salthillcapital.com / 416.646.7359

The information contained herein, including layouts, plans, and stated square footage, is provided solely for marketing purposes. Such information is approximate, non binding, and subject to change without notice.